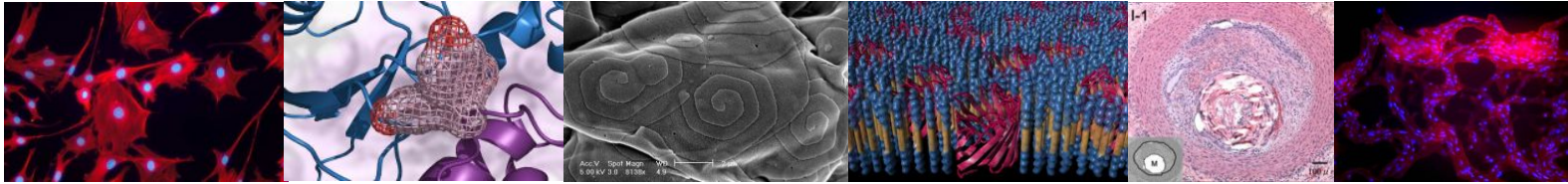




DEPARTMENT OF BIOENGINEERING UNIVERSITY OF CALIFORNIA, LOS ANGELES



FACULTY POSITIONS AVAILABLE

The Department of Bioengineering at the UCLA Henry Samueli School of Engineering and Applied Science invites highly qualified applications for TENURE-TRACK and TENURED faculty positions at the Assistant Professor, Associate Professor, and Full Professor levels. Candidates with a Ph.D. and an excellent track record in research and teaching in bioengineering or related science and engineering fields are encouraged to apply.

The application packet should be organized in the following order:

- (1) Curriculum vitae
- (2) Research statement
- (3) Teaching statement
- (4) References
 - All applicants: please provide names and contact information for at least 5 referees.
 - Applicants for the Assistant Professor positions should also arrange for recommendation letters to be sent from at least three referees.

The positions are open until they are filled. Applications received by **October 15, 2007** will be considered for the first round of interviews. Please send a hard copy of your completed application to:

Professor Ben Wu
Chair, Faculty Search Committee
Department of Bioengineering
Henry Samueli School of Engineering and Applied Science
420 Westwood Plaza, Room 5121 Engineering V
University of California, Los Angeles
Los Angeles, CA 90095-1600
BEsearch@seas.ucla.edu
<http://www.bioeng.ucla.edu>

The University of California, Los Angeles is an Equal Opportunity Employer.